

ABERDEEN CITY COUNCIL

COMMITTEE	Education and Children's Services Committee
DATE	12 September 2023
EXEMPT	No
CONFIDENTIAL	No
REPORT TITLE	Community Learning and Development Plan
REPORT NUMBER	CUS/23/288
DIRECTOR	Andy McDonald
CHIEF OFFICER	Jacqui McKenzie
REPORT AUTHOR	Margaret Stewart
TERMS OF REFERENCE	1.1.1

1. PURPOSE OF REPORT

- 1.1 The purpose of this report is to update on progress towards delivery of the Community Learning and Development Plan 2021-2024 and propose a change in governance arrangements to better align the work of Community Learning to other partnership activity relating to our model of Family Support.

2. RECOMMENDATIONS

That the Committee

- 2.1 Note the progress made towards delivery of the Community Learning and Development Plan 2021-2024;
- 2.1 Endorse the proposed change in governance for the Community Learning and Development Plan 2021-2024 and for future Community Learning and Development plans; and
- 2.2 Instruct the Chief Officer – Early Intervention and Community Empowerment to report annually to the Education and Children Services Committee with an annual update on progress.

3. CURRENT SITUATION

- 3.1 The Scottish Government Strategic Guidance for Community Planning Partnerships, Community Learning and Development, places a number of obligations on Community Planning Partnerships and Local Authorities in respect of Community Learning and Development (CLD) including the establishment of 3 yearly Community Learning and Development Plans.
- 3.2 The responsibility for meeting the requirements of the CLD Regulations rests with the Local Authority as a whole. In line with the Education (Scotland) Act 1980, the CLD Regulations refer to the "Education Authority" but staff who have

a role in securing the provision of CLD may be located in a number of different settings within the Local Authority. Within Aberdeen City Council, CLD Services comprise Community Development, Youth Work, Adult Learning and Family Learning.

- 3.3 The Government's National Performance Framework sets out the strategic objective for all public services including those delivering CLD. Within this the focus of CLD should be:
- Improved life chances for people of all ages through learning, personal development and active citizenship
 - Stronger, more resilient, supportive, influential and inclusive communities.
- 3.4 Local authorities cannot meet the requirements of the CLD Regulations without engaging with other partners, learners and community groups and organisations. Such engagement is carried out in accordance with [CLD values and principles](#).
- 3.5 Local authorities also consider how the process which they put in place to secure the provision of CLD contributes to the Community Planning process.
- 3.6 The Requirements for Community Learning and Development (Scotland) Regulations 2013 are intended to support the achievement of national policy goals for CLD ensuring:
- communities, but particularly those who are disadvantaged, have access to the CLD support they need
 - communities are enabled to express their needs for CLD provision
 - Community Planning Partnerships (CPP), local authorities and providers of public services more generally, respond appropriately to the expectations set by the CLD Guidance.

Current Situation

- 3.7 The current Aberdeen City Council Community Learning and Development Plan 2021-2024, developed in line with national expectations, was approved by the former Operational Delivery Committee on 16 September 2021.
- 3.8 Since establishment of the Plan, CLD and partners have worked hard to deliver against the Plan, whilst taking account of the rapidly changing context and circumstances arising from the pandemic, the cost of living crisis and desire to positively respond to the needs of those fleeing the conflict in Ukraine.
- 3.9 Progress against the Plan is currently tracked within CLD Teams and overseen and scrutinised by The Community Empowerment Group on behalf of Community Planning Aberdeen and partner organisations. This includes consideration of how the CLD Plan supports delivery of the Aberdeen City Local Outcome Improvement Plan and underpinning Locality Plans to ensure improved outcomes for people and communities across the city.
- 3.10 The CLD team have undertaken an evaluation of progress against the CLD Plan in order to identify priorities for action over the final year of the current plan. All those involved in the delivery of CLD across the city are proud of

their collective achievements in delivering on the Plan to date. Considerable progress has been made in:

- Working in partnership with primary and secondary schools; delivering Edge of Care pilots as a response to The Promise and funded youth work supporting young people's mental and physical health.
- Supporting young people to gain the employability skills required for the world of work, through Fairer Aberdeen Funded, shmuTrain.
- Working with partners from the Family Wellbeing Hubs to provide early intervention support to children, young people and families.
- Improving the Mental Wellbeing of adults in our communities
- Equipping Adult Learners to meet key challenges and transitions in their lives; enabling those seeking sanctuary or asylum and empowering our Gypsy Traveller community to gain new skills and confidence.
- Providing capacity building support for communities to create, develop and sustain programmes and activities which address emerging priorities and provide increased opportunities for citizens for example; Warm Spaces and the Pop up Ukrainian Community Centre.
- Enabling social enterprise and community wealth building through partnerships with Elevator, NESCOL, Pathways and localised community groups to take action forward.
- Further, developing a clear and coherent framework to support volunteers and volunteering within communities and across community groups and organisations.

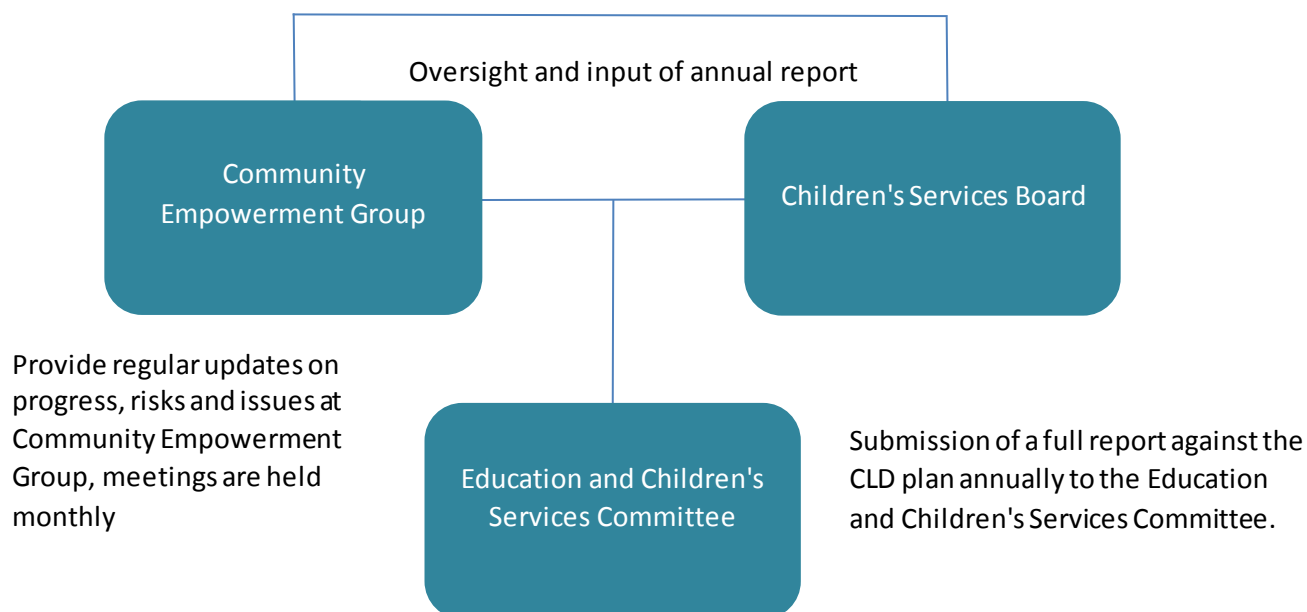
3.11 Areas for greater focus over the final year of the current plan include:

- Improve data sharing and joint planning between youth work and employability providers.
- Further work to define and promote clear learning pathways across different providers.
- Test engagement approaches in collaboration with Police Scotland and retail partners to address the number of City centre youth related disturbances.
- Continue to evaluate the need and explore alternative services and measures to provide support for Kinship Carers.
- Explore how commissioned CLD services contribute to the family Support Model.
- Establish a citywide network of resilience reps from communities to share good practice, ensure resilience plans are up to date
- Improved capturing of learner voice to inform the future plan for CLD provision.

3.13 Community Learning and Development officers currently share annual reports with the Community Empowerment Group; however, this annual monitoring and reporting has not been shared with members.

3.14 The proposed change in governance would see reporting on the Community Learning and Development plan and subsequent plans being part of the Education and Children's Services committee business plan, with annual updates on progress presented for scrutiny. This would happen following

oversight and input from the Community Empowerment Group and Children Services Board.



- 3.15 The evaluative report, in Appendix A, incorporates the impact of the internally delivered aspects of the CLD Plan from its approval in 2021 to September 2023 and information from CLD providers mostly covering the period from 2021 to 2022. Commissioned CLD providers and CLD Partners are currently finalising their evaluation of activity for presentation to the Community Empowerment Group in November 2023. Receipt of this final information will trigger a review of this evaluation (particularly the RAG ratings). The information received will be shared with Members through a Service Update.
- 3.16 It is proposed that future yearly reports on the progress of the CLD plan will retain this format and be produced in collaboration with CLD providers from across the city to ensure Members of the Education and Children's Services Committee have access to a comprehensive overview of the impact of Community Learning activity.
- 3.17 Work is now beginning to plan our approach to the development of the next Community Learning and Development Plan. This will ensure the seamless transition from the final evaluation of the current plan in August of 2024 to delivery against the next.

Children's Rights

- 3.17 This report contains no recommendations or content that require for the direct accounting of impact on children's rights.

4. FINANCIAL IMPLICATIONS

4.1 There are no direct financial implications arising from the recommendations of this report.

5. LEGAL IMPLICATIONS

5.1 There are no direct legal implications arising from the recommendations of this report. The Requirements for Community Learning and Development (Scotland) Regulations 2013 place duties upon the Authority in relation to the process to be undertaken in securing community learning and development including a requirement to publish plans every 3 years containing information about the provision of CLD.

6. ENVIRONMENTAL IMPLICATIONS

6.1 There are no environmental implications

7. RISK

Category	Risks	Primary Controls/Control Actions to achieve Target Risk Level	*Target Risk Level (L, M or H) *taking into account controls/control actions	*Does Target Risk Level Match Appetite Set?
Strategic Risk	Risk of not delivering against statutory requirements.	Mitigated by establishing and reporting progress against the CLD Plan	L	yes
Compliance	Risk of not complying with CLD regulations.	Mitigated by embedded self-evaluation by CLD teams and staff CPD	L	yes
Operational	Risk of not working to the national policy goals given the changing context in the city.	Mitigated by being agile and responsive to changes in the needs of the community	L	yes
Financial	Risk of not using resource most	Mitigated by delivering against the CLD Plan and by remaining alert to unanticipated	L	yes

	effectively to support communities	challenges facing those we serve and responding proactively.		
Reputational	Risk of not delivering a strong CLD provision for city residents	Mitigated by having a clear and well scrutinised plan	L	yes
Environment / Climate	Risk of not complying with local and national NetZero target	Mitigated by proactive measures to manage resources	L	yes

8. OUTCOMES

<u>COUNCIL DELIVERY PLAN 2023-2024</u>	
	Impact of Report
<p>Aberdeen City Council Policy Statement</p> <p>A City of Opportunity</p> <p>Empowering Communities</p>	<p><i>The proposals within this report support the delivery of the following aspects of the policy statement:-</i></p> <p><i>Sharing the progress against the Community Learning and Development Plan aims to increase awareness of the scope of CLD provision and the impacts delivered through the plan as well as ensuring effective, responsible and inclusive delivery against the CLD plan contributing to a City of Opportunity and Empowering Communities.</i></p>
<u>Aberdeen City Local Outcome Improvement Plan 2016-26</u>	
<p>Prosperous Economy</p> <p>Stretch Outcomes</p>	<p><i>Sharing the progress against Community Learning and Development Plan aims to increase awareness of the scope of CLD provision and the impacts delivered through the plan as well as ensuring effective, responsible and inclusive delivery against the CLD plan contributing to:</i></p> <ol style="list-style-type: none"> 1. No one will suffer due to poverty by 2026. 2. 400 unemployed Aberdeen City residents supported into Fair Work by 2026.

<p>Prosperous People Stretch Outcomes</p>	<p><i>Sharing the progress against the Community Learning and Development Plan aims to increase awareness of the scope of CLD provision and the impacts delivered through the plan as well as ensuring effective, responsible and inclusive delivery against the CLD plan contributing to</i></p> <p>Prosperous people (Children and Young people):</p> <p>5.2 Increasing children's knowledge and understanding of their own physical and mental wellbeing and take an early intervention and prevention approach.</p> <p>7.1 Improving pathways to education, employment and training for all our children</p> <p>8. 83.5% fewer young people (under 18) charged with an offence by 2026.</p> <p>9. 100% of our children with Additional Support Needs/disabilities will experience a positive destination</p> <p>Prosperous People (adults):</p> <p>11.1 Supporting vulnerable and disadvantaged people, families and groups.</p> <p>11.2 Provide individuals and communities with the social resources needed to reduce feelings of loneliness and social isolation.</p> <p>11.3 Encouraging adoption of healthier lifestyles through a whole family approach.</p>
<p>Prosperous Place Stretch Outcomes</p>	<p><i>Sharing the progress against the Community Learning and Development Plan aims to increase awareness of the scope of CLD provision and the impacts delivered through the plan as well as ensuring effective, responsible and inclusive delivery against the CLD plan contributing to Prosperous Place:</i></p> <p>13.2 Contributing to the delivery of Aberdeen Adapts by developing a bottom up approach to community resilience to encourage greater ownership and independent action towards understanding communities' risks from climate change and adapting to them.</p> <p>15.1 Increasing the diversity, quality and use of the Aberdeen's green spaces by facilitating community participation in them to restore nature and increase people's satisfaction, health, and wellbeing</p>
<p>Regional and City Strategies Community Learning and Development Plan 2021-2024 Children's Services Plan</p>	<p><i>The proposals within this report support the Community Learning and Development plan 2021-2024 and subsequent plans and their governance.</i></p>

Community Empowerment Strategy	
--------------------------------	--

9. IMPACT ASSESSMENTS

Assessment	Outcome
Integrated Impact Assessment	Stage 1 Assessment has been completed.
Data Protection Impact Assessment	not required

10. BACKGROUND PAPERS

- 10.1 [Community Learning and Development Plan 2021-2024](#)
- 10.2 [Community Learning and Development Plan 2021- 2024 - Committee Report 16/09/2021](#)
- 10.3 [Strategic guidance for community planning partnerships: community learning and development](#)

11. APPENDICES

- 11.1 Appendix A - Learning changes lives for the better – progress on the CLD Plan 2021-2024
- 11.2 Appendix B – CLD Case studies

12. REPORT AUTHOR CONTACT DETAILS

Name	Margaret Stewart
Title	Service Manager, Libraries and Community Learning
Email Address	Mstewart@aberdeencity.gov.uk
Tel	01224 067624